

**battery type:**  
**battery size:**  
**chemical system:**

Lithium Button Cell (PH-type)  
 CR2430  
 Lithium Manganese Dioxide



<https://www.mega-piles.com/>

**nominal voltage:** 3.0 V  
**open circuit voltage:** 3.0...3.4 V  
 2.9...3.4 V

#### Conditions

new battery  
 after 1 year storage at 20°C

all measurements at 22 ± 2°C ambient

#### capacity

rated: 300 mAh

continuous discharge at 15kΩ load; 24hours/day  
 End Voltage (EV): 2.0V

minimum: 270 mAh

continuous discharge at 15kΩ load; 24hours/day  
 EV: 2.0V

#### standard discharge time

minimum: 130 h

at 1.5kΩ load (for QC measurement)  
 EV: 2.0V

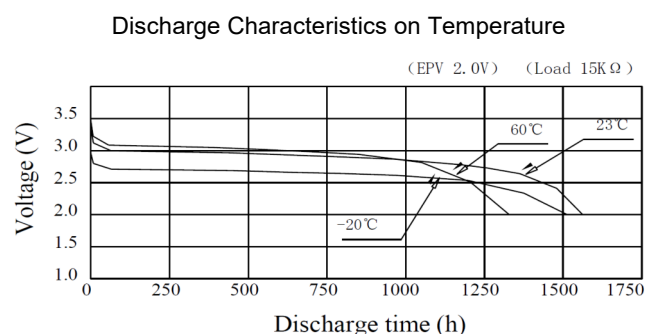
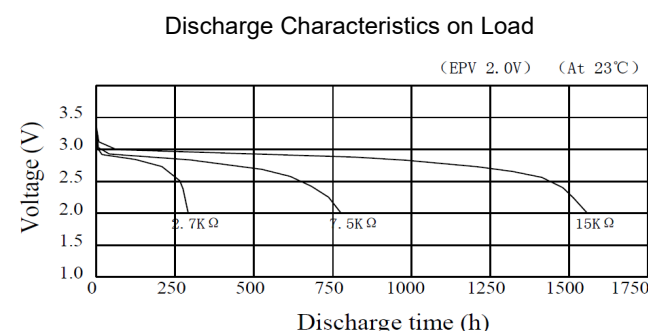
#### discharge currents

standard: 0.2 mA

max. recommended current  
 under continuous discharge: 8 mA

max. recommended current  
 under pulse discharge: 30 mA

#### discharge diagrams:



**shelf life:** 10 years under proper storage conditions (ta: ≤ 22°C; RH: 60 ± 15%)

**self-discharge:** ≤ 2 % per year (at 20°C ambient temperature)

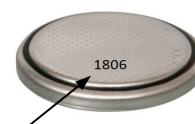
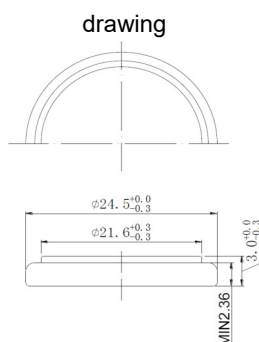
**operating temperature range:** - 30...65 °C

**storage temperature:** 0...30 °C (recommended)

#### mechanical specifications:

outer battery dimensions

diameter: 24.5mm +0/-0.3mm  
 height: 3.0mm +0/-0.3mm



printed production date  
 4 digits (YYMM)  
 e.g. 1806 = 2018 June



nominal weight: 4.5 g (approx.)

107



#### ANSMANN Specifications for model:

data sheet no. / part no.

supplier no.

author / date

#### Lithium Button Cell CR2430

704080

TG / 15.01.2019