
LR20 Standard

Product specifications for cylindrical
alkaline battery

LR20 Standard

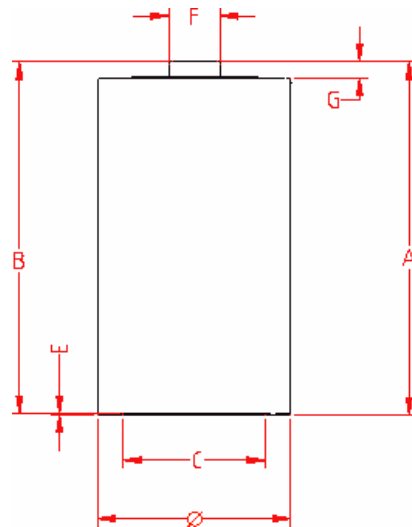
1. Battery Identification

Name	XL/ LR20/ AM1/ D/ MN1300	
Type	alkaline/ foil	
Nominal Voltage	1.5 V	
Electrolyte	KOH (potassium hydroxide)	
Average Weight	137.7 g	
Nominal internal resistance	+/- 60 mOhm (1kHz – fresh)	

2. Battery Dimensions

Dimension	Max	Min	Typical
A	61.5		60.6
B		59.5	60.3
C		18.0	24.2
E	1.0		0.3
F	9.5		8.7
G		1.5	2.5
Ø	34.2	32.3	33.0

Unit : mm



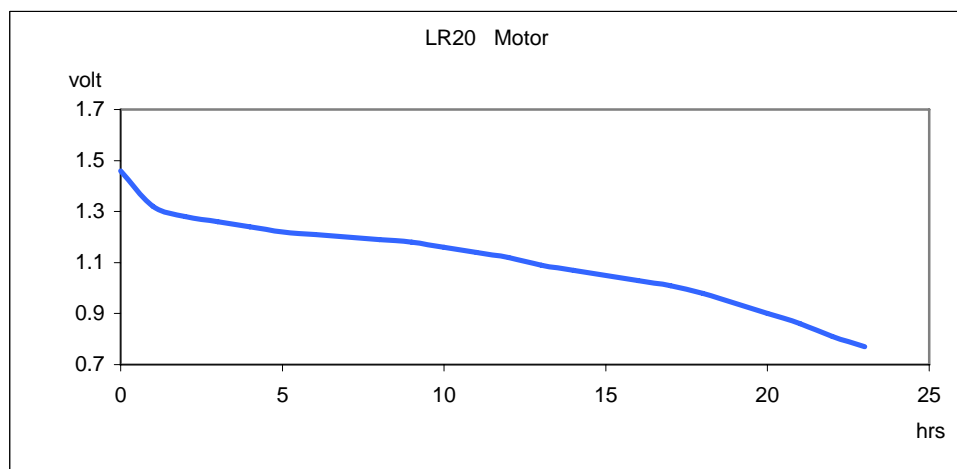
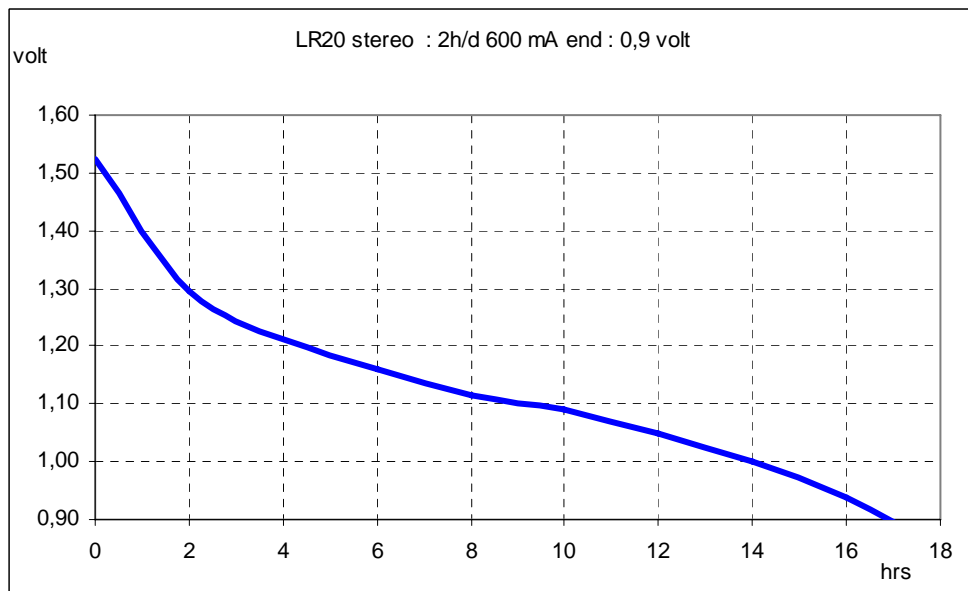
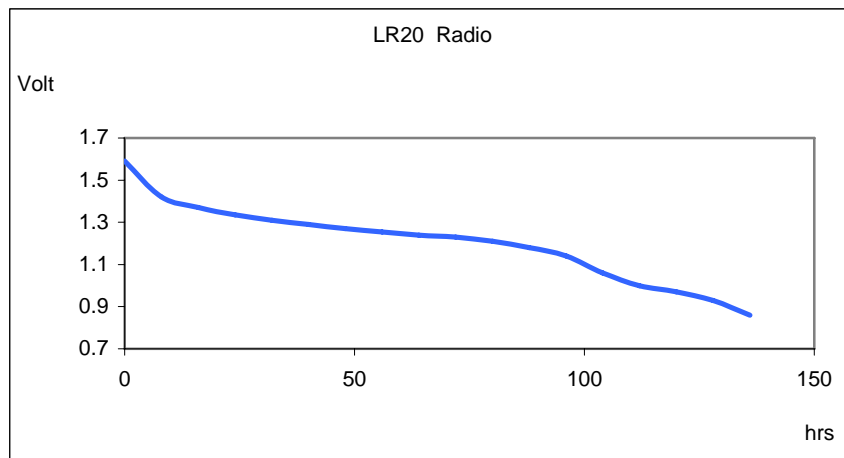
3. Battery Performance

A. Typical Discharge Values

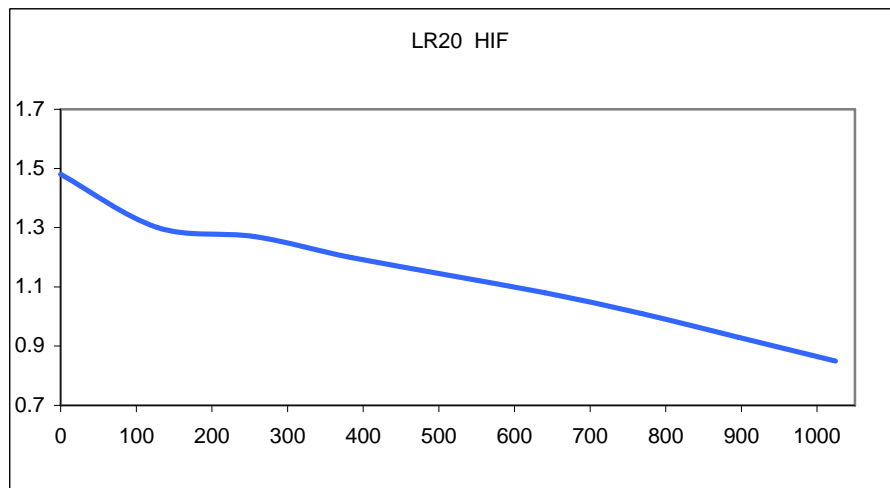
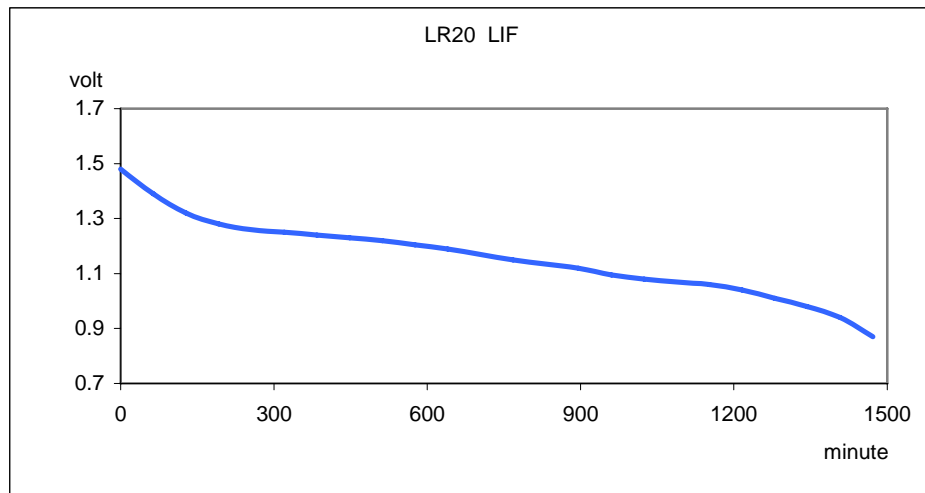
TEST	RESISTANCE	DAILY PERIOD	END POINT	TYPICAL	MIN AVG
Radio	10 ohm	4h	0.9 V	120h	101h
Motor	2.2 ohm	1h	0.8 V	23h	19,9h
LIF	2.2 ohm	4min/h-8h/d	0.9 V	1450 min	1291 min
HIF	1,5 ohm	4min/15min-8h/d	0.9 V	920 min	770 min
Stereo	600 mA	2h	0.9V	16,3h	12,5h

LR20 Standard

4. Discharge Curves



LR20 Standard



5. Material Safety Data Sheet

Item	Material	%
Total Weight		135,8g
Cathode	MnO ₂ /C	49%
Anode	Zn/KOH	27%
Separator	Paper	1%
Current Collector	Brass	1%
Electrolyte	KOH/H ₂ O	7%
Steel Can	Ni plated steel	11%
Bottomplate	Ni plated steel	2%
Label	PVC	2%

No Mercury (Hg), Cadmium (Cd) or Lead (Pb) are used in the battery.