

battery type:
battery size:
chemical system:

Lithium Button Cell (PH-type)
 CR2032
 Lithium Manganese Dioxide



<https://www.mega-piles.com/>

nominal voltage: 3.0 V
open circuit voltage: 3.0...3.4 V
 2.9...3.4 V

Conditions

new battery
 after 1 year storage at 20°C

all measurements at 22 ± 2°C ambient

capacity

rated: 245 mAh

continuous discharge at 15kΩ load; 24hours/day
 End Voltage (EV): 2.0V

minimum: 230 mAh

continuous discharge at 15kΩ load; 24hours/day
 EV: 2.0V

standard discharge time

minimum: 155 h

at 2kΩ load (for QC measurement)
 EV: 2.0V

discharge currents

standard: 0.2 mA

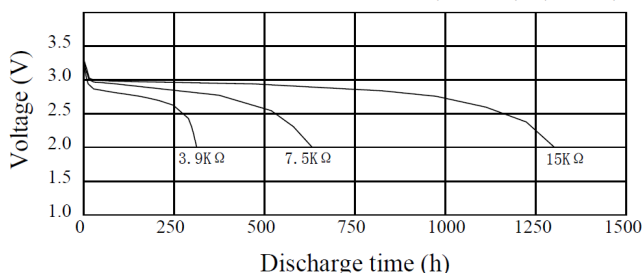
max. recommended current
 under continuous discharge: 6 mA

max. recommended current
 under pulse discharge: 20 mA

discharge diagrams:

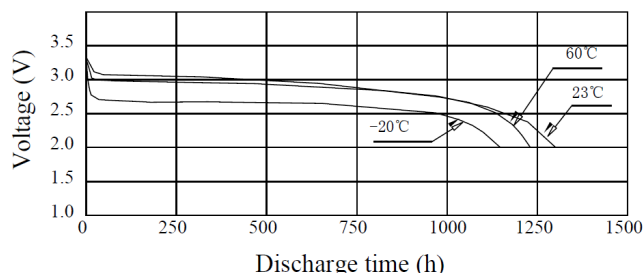
Discharge Characteristics on Load

(EPV 2.0V) (At 23°C)



Discharge Characteristics on Temperature

(EPV 2.0V) (Load 15KΩ)



shelf life: 10 years under proper storage conditions (ta: ≤ 22°C; RH: 60 ± 15%)

self-discharge: ≤ 2 % per year (at 20°C ambient temperature)

operating temperature

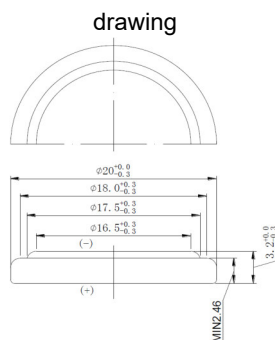
range: - 30...65 °C

storage temperature: 0...30 °C (recommended)

mechanical specifications:

outer battery dimensions

diameter: 20.0mm +0/-0.3mm
 height: 3.2mm +0/-0.3mm



nominal weight: 3.2 g (approx.)



printed production date
 4 digits (YYWW)
 e.g. 1831 = year (20)18, calendar week 31

107



ANSMANN Specifications for model:

data sheet no. / part no.

supplier no.

author / date

Lithium Button Cell CR2032

704080

TG / 06.02.2020