

battery type: Lithium Button Cell
battery size: CR1220
chemical system: Lithium Manganese Dioxide



<https://www.mega-piles.com/>

nominal voltage: 3.0 V
open circuit voltage: 3.0...3.4 V (new battery)
 2.9...3.4 V (after 1 year storage at 20°C)

Conditions

new battery
 after 1 year storage at 20°C

all measurements at 22 ± 2°C ambient

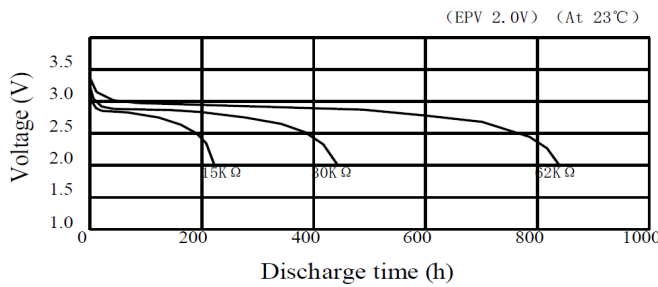
capacity
 rated: 38 mAh (continuous discharge at 62kΩ load; 24hours/day
 End Voltage (EV): 2.0V)
 minimum: 35 mAh (continuous discharge at 62kΩ load; 24hours/day
 EV: 2.0V)

standard discharge time
 minimum: 150 h (at 13kΩ load (for QC measurement)
 EV: 2.0V)

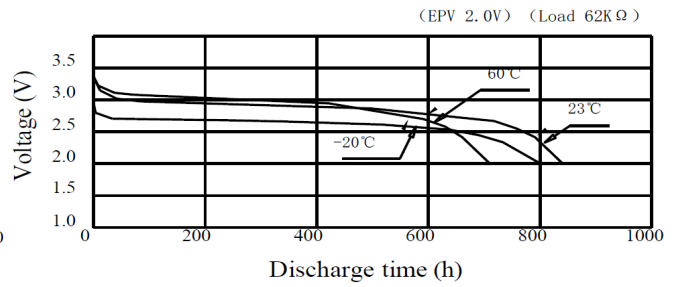
discharge currents
 standard: 0.1 mA
 max. recommended current
 under continuous discharge: 1 mA
 max. recommended current
 under pulse discharge: 5 mA

discharge diagrams:

Discharge Characteristics on Load



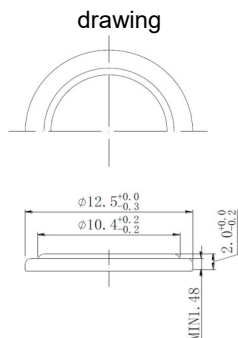
Discharge Characteristics on Temperature



shelf life: 10 years (under proper storage conditions (ta: ≤ 22°C; RH: 60 ± 15%))
self-discharge: ≤ 2 % (per year (at 20°C ambient temperature))
operating temperature range: - 20...70 °C
storage temperature: 0...30 °C (recommended)

mechanical specifications:

outer battery dimensions
 diameter: 12.5mm +0/-0.3mm
 height: 2.0mm +0/-0.2mm



printed production date
 4 digits (YYMM)

nominal weight: 0.8 g (approx.)

	ANSMANN Specifications for model:	Lithium Button Cell CR1220
	data sheet no. / part no.	
	supplier no.	704080
	author / date	TG / 15.01.2019