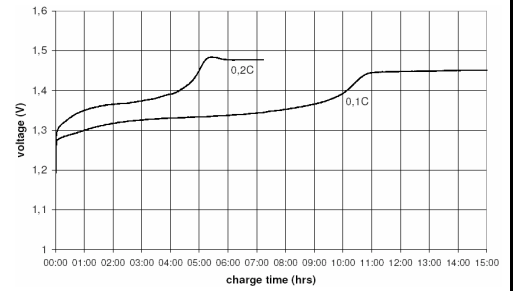


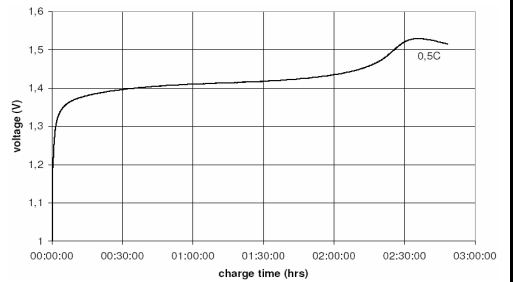
		Conditions	
cell type:		NiMH	
cell size:		C	
nominal voltage:	1.2	V	
max. charge voltage:	1.45	V	at standard charge (0.1C / 20°C)
capacity			
nominal:	4500	mAh	discharge at 0.2C
minimum:	4000	mAh	discharge at 0.2C
	3600	mAh	discharge at 1C
			1.0V end discharge voltage
			ta: 20°C
max. continuous discharge current:	4500	mA	ta: 0...45°C
charge			
standard charge:	450	mA	14hrs
quick charge:	1250	mA	4hrs
fast charge:	2250	mA	2.2hrs
recommended charge termination control parameters:	5...10	mV	- delta V
	0.8...1	°C	temperature rise per minute
	45...50	°C	TCO (temperature cut off)
trickle charge current:	45...150	mA	(recommended)
continuous overcharge: (less than 1 year)	≤ 400	mA	no conspicuous deformation no leakage
internal resistance: (impedance)	≤ 18	mΩ	at 1KHz battery fully charged
life expectancy:	≥ 500	cycles	acc. IEC standard
self discharge			
charge retention:	≥ 60	%	after 28days storage at 20°C
ambient temperature range:			
	0...45	°C	standard charge
	10...40	°C	fast charge
	- 20...65	°C	discharge (≤1.0C)
	0...45	°C	discharge (>1.0C)
	- 20...50	°C	storage (≤1 month)
	- 20...40	°C	storage (≤3months)
	- 20...25	°C	storage (≤12months)

Diagrams

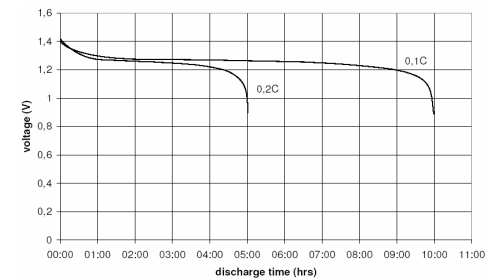
standard charge



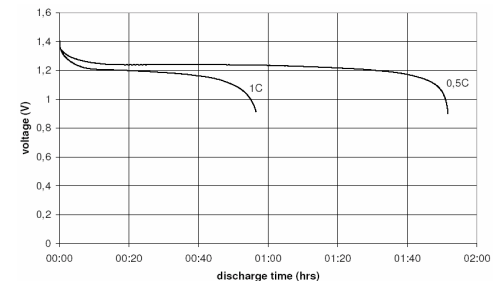
fast charge



low rate discharge



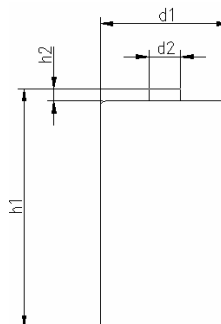
high rate discharge




QCT1:	20/3900/20
QCT2:	30/3500/25

mechanical specifications

cell dimensions (incl. label)			
diameter d1:		25.8	- 1.0 mm
diameter d2:	max.	7.5	mm
height h1:		50.0	- 2.0 mm
height h2:	min.	1.5	mm
weight:		80	± 8 g
blister card dimensions:		123	x 86 mm
blister card weight (incl. batteries):		85	g



	ANSMANN Specifications for model:	C - 4500mAh
		1pcs blister package
	data sheet no. / part no.	5030632
	version no.	0
	author / date	Gramlich / 23.02.2009